



---

# Finchmoor, Harlow

Guide Price £415,000 Freehold

3 bedroom semi-detached house for sale

---

## Description

**\*\* GUIDE PRICE £415,000-£425,000\*\***

Jukes Estate Agents are delighted to offer for sale this immaculate three-bedroom semi-detached house situated in the popular Staple Tye area of Harlow.

**\*\*The property is being sold by conditional sale please call the office for details\*\***

Wow what a lovely family home this is and it has been really well looked after by the lovely owners who are looking to downsize and move out of the area.

As you enter the property, you have a lot of ground floor space, a large lounge with a dining area and patio doors leading out to the really spacious garden, and a good-sized modern kitchen.

Moving upstairs, you have 3 good-sized bedrooms and a large family bathroom.

Outside space is impressive with a large sweeping garden with a large patio area and a good-sized lawn area which ideal for those warm summer nights and a good barbecue.

At the front of the house, you have plenty of parking with the garage and driveway. The Property is situated close to staple Tye shopping centre and Lister House doctors surgery with the town centre only a short drive away.



Harlow, a town in Essex in the East of England, offers a number of positives for residents. Here's a well-rounded look at what makes living in Harlow appealing to many people:

Property prices and rental costs in Harlow are significantly more affordable than in London, making it an attractive location for commuters and young families.

In general, day-to-day expenses are lower than in central London or more affluent parts of Essex.

Harlow has two train stations (Harlow Town and Harlow Mill) with regular services to London Liverpool Street, making it ideal for commuters.

It's close to the M11 motorway and A414, offering good connectivity to London, Cambridge, and Stansted Airport.

Harlow Town Park is one of the largest urban parks in the UK, featuring gardens, woodlands, and a pets' corner.

The River Stort Offers scenic walks, cycling paths, and opportunities for kayaking and paddleboarding.

A mix of good primary and secondary schools in the Staple Tye area, including some academies with improving reputations. Many active local groups, clubs, and initiatives support a sense of local pride and community.

Designed by Sir Frederick Gibberd after WWII, it includes well-thought-out public spaces and zones.

Known as "Harlow Sculpture Town" due to over 100 public sculptures, including works by Henry Moore and Barbara Hepworth. Princess Alexandra Hospital: A major hospital serving West Essex and East Hertfordshire.

The Harvey Centre and surrounding retail parks provide a mix of high street and independent shops.

The Playhouse Theatre: A hub for live performances and local productions.

Facilities for swimming, gym, and sports are widely available.

New housing developments, business parks, and town centre regeneration efforts are improving infrastructure and appearance.

Harlow & Gilston Garden Town: A long-term project aiming to deliver thousands of new homes and improved services thus elevating Harlow to a new level.

\*\* Within your offer you will be required to pay 1% plus VAT in advance to secure the property this is not a fee call the office for further details\*\*

Council Tax Band: C

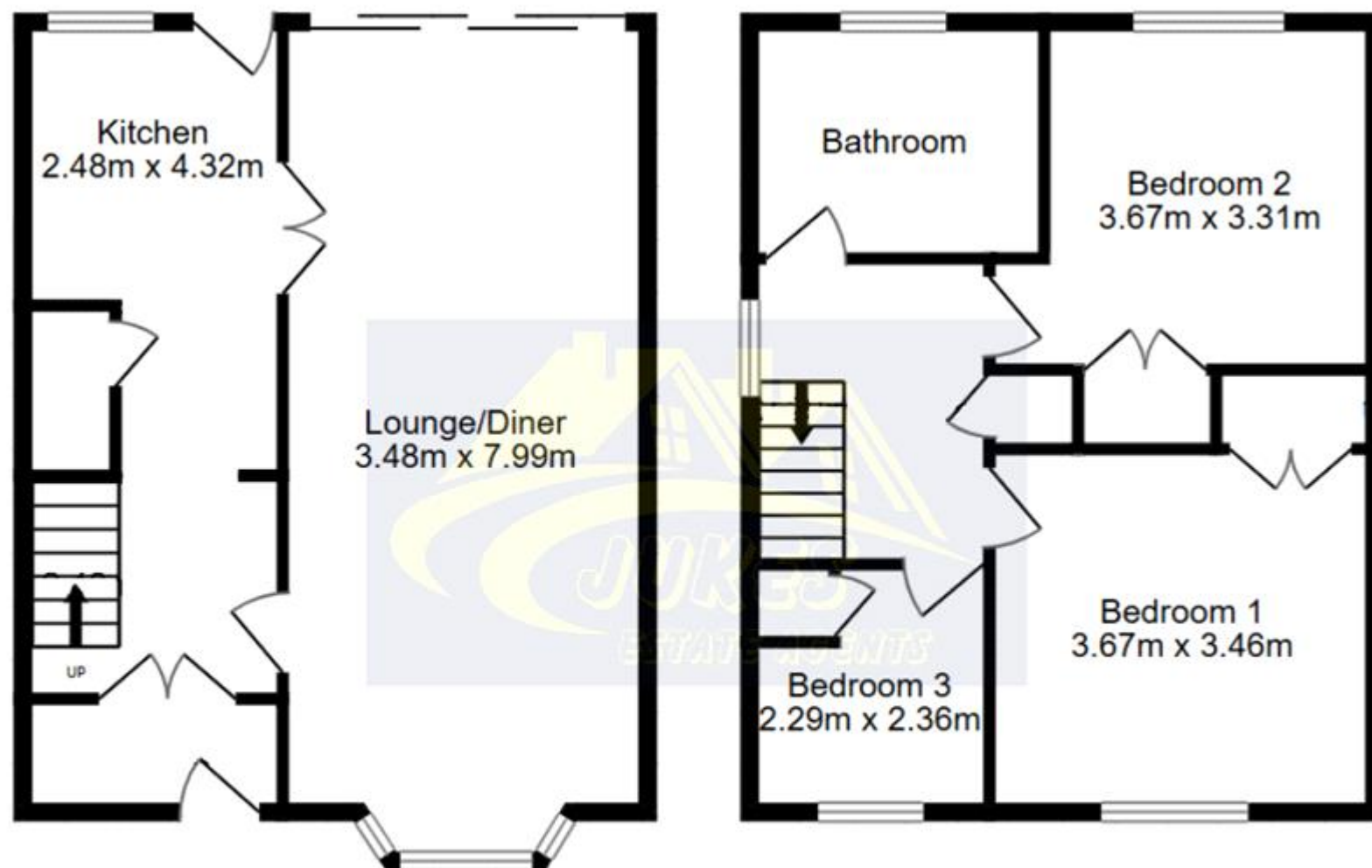
Tenure: Freehold

Parking options: Driveway, Garage

Garden details: Private Garden, Rear Garden

**Tenure**

Freehold



Whilst every attempt has been made to ensure the accuracy of the floor plan contained here, measurements of doors, windows, rooms and any other items are approximate and no responsibility is taken for any error, omission, or mis-statement. This plan is for illustrative purposes only and should be used as such by any prospective purchaser. The services, systems and appliances shown have not been tested and no guarantee as to their operability or efficiency can be given



Viewing by appointment only  
LGT Estate Agents T/A Jukes Estate Agents - Head Office  
Jukes Estate Agents, Harlow Enterprise Hub, Kao Hockham Building, Harlow, Essex CM20 2NQ  
Tel: 01279 295524 Email: [info@jukesestates.co.uk](mailto:info@jukesestates.co.uk) Website: <https://jukesestates.co.uk/>

